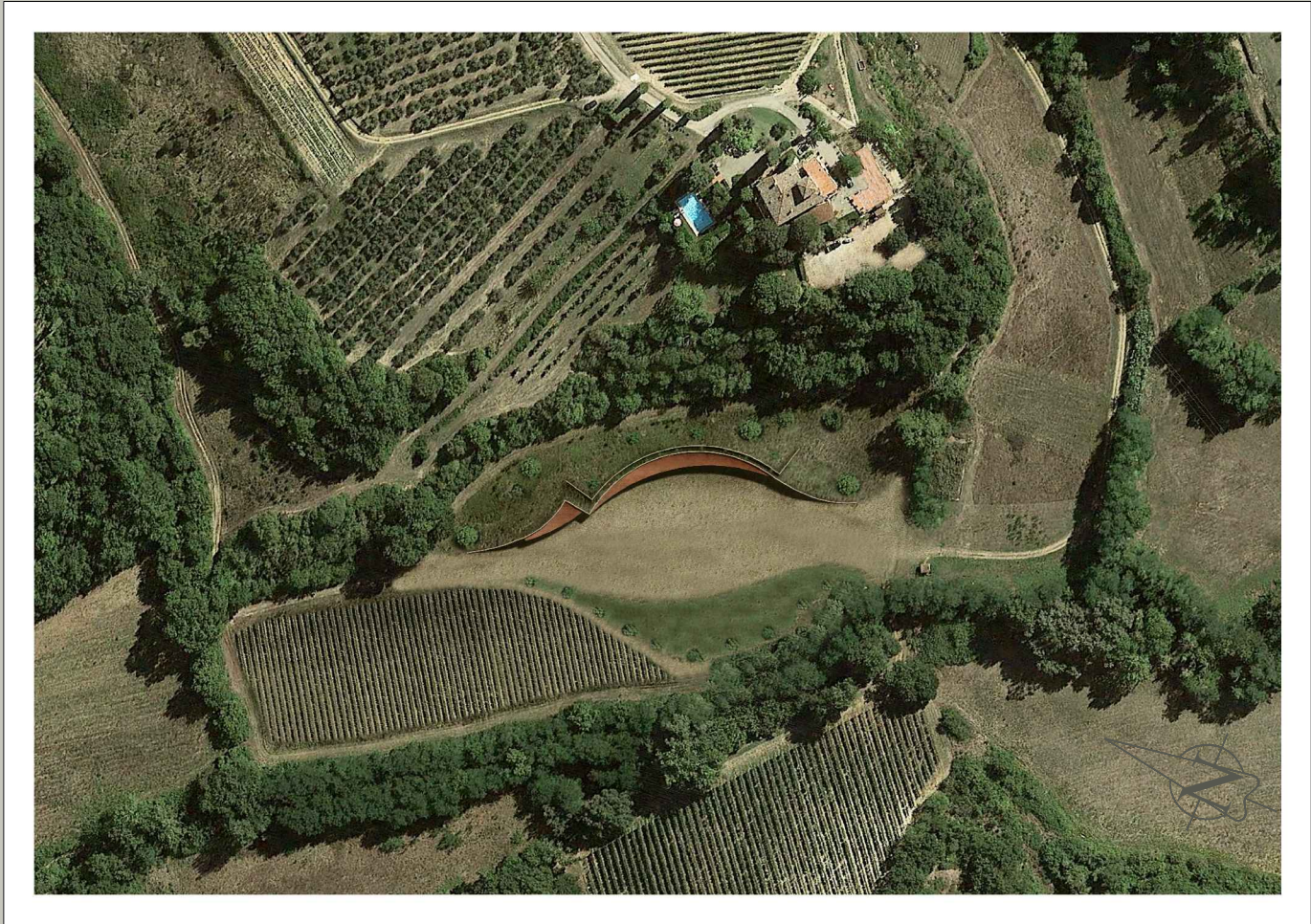


COMUNE DI TAVARNELLE VAL DI PESA
CITTA' METROPOLITANA DI FIRENZE

Azienda Agricola "POGGIO ROZZI" loc. Romita, Via Romita n° 29



Richiedente:"Azienda Agricola Poggio Rozzi di Eberhard Toggenburg"

Proprietario:dott. Ulrich Toggenburg

dott.agr. Michele Lotti Margotti

geom. Luca Anichin

dott. ing. Daniele Lapi

dott.geol. Maria Angela Botta

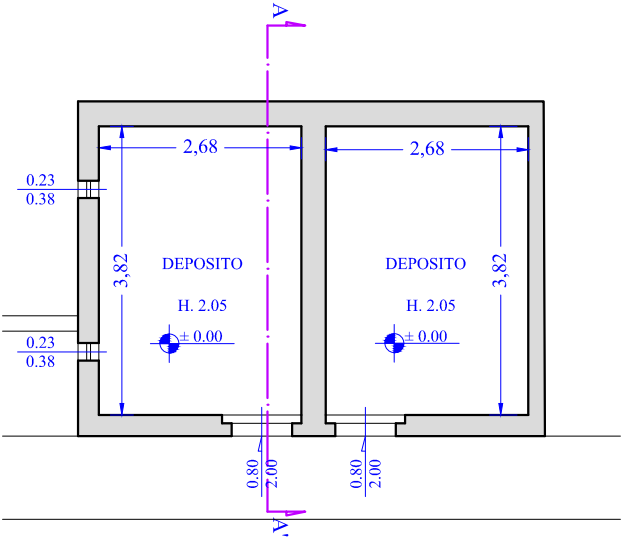
PIANTE, SEZIONI, CALCOLO VOLUME E SUP. UTILE

STATO ATTUALE

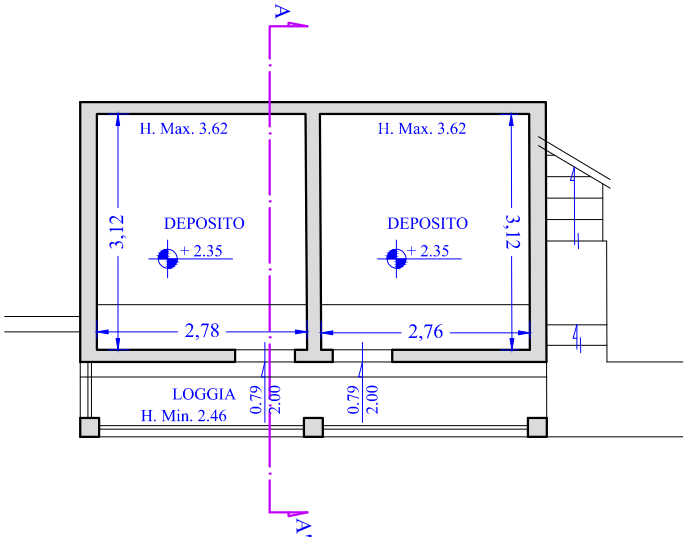
TAV.
13.E
DICEMBRE '16

scala 1:100

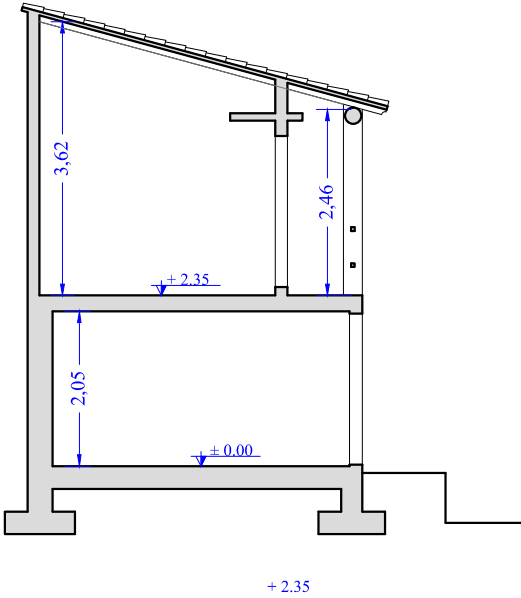
PIANO TERRENO
scala 1:100



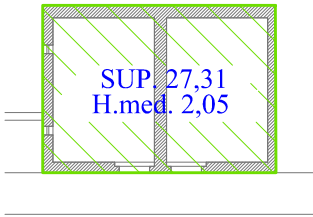
PIANO PRIMO
scala 1:100



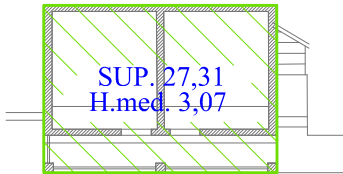
SEZIONE A-A'
scala 1:100



CALCOLO VOLUME
CALCOLO VOLUME COME DA PAPMAA



SUP. UTILE PIANO SEMINT. =20.08 mq
SUP. COPERTA PIANO SEMINT. =27.31 mq
VOLUME = SUP,COPERTA X H.+0,30=
= 27,31 x (2,05+0,30) =
64.18 mc



SUP. UTILE PIANO PRIMO. =22.27mq
SUP. COPERTA PIANO PRIMO. =27.31mq
VOLUME = SUP,COPERTA X H.=
= 27,31 x 3.07 =
83.84 mc

VOLUME TOTALE=148,02 mc